

Laflor®

The Ultimate name of Premium Luxury Vinyl Tile of Korea since 1989
- WooSung LaFlor® LVT & LVP



Woosung Chemical Co.,Ltd.
333-1 Mamyong-Ri, Naechon-myeon, Pocheon-si, Gyeonggi-do,Korea
Tel: +82-31-532-2250-3 Fax:+82-031-532-2254
Email : info@laflor.co.kr. HP : www.laflor.co.kr

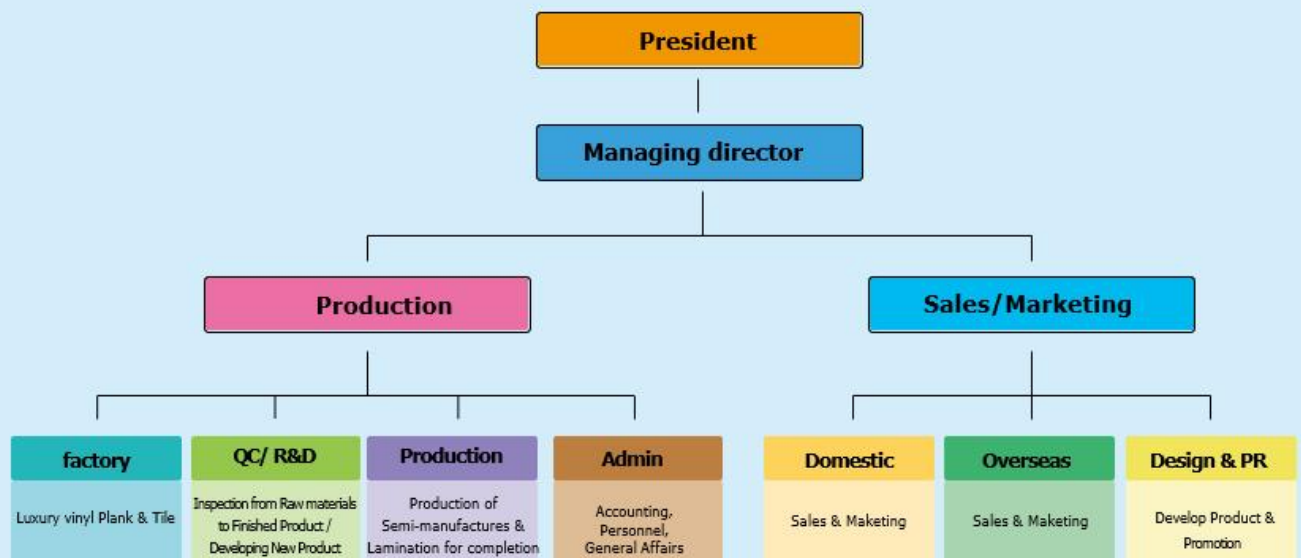
COMPANY PROFILE

Woosoung Chemical Co.,Ltd is the leading manufacturer of Luxury Vinyl Tile in Korea having 35 years of history and our goal is to satisfy our whole customers and partners for mutual success of business by our quality products.

With a legacy spanning over three decades, we will continue to strive to provide the unique value of our products to many people in the future, based on world-class quality and widely beloved design sensibility."

- Company Name: Woosoung Chemical Co.,Ltd.
- CEO : S. B. Park
- Establishment: year 1989
- Employees: 50
- Factory & Office
333-1 Mamyong-Ri, Naechon-myeon, Pocheon-si, Gyeonggi-do, Korea
- Product
Premium Luxury Vinyl Tile and Plank (Brand name : LaFlor® LVT)

COMPANY ORGANIZATION



COMPANY HISTORY

- 1988. Pioneering Press Technology in Korea**
Woosoung's journey began in 1986 when we introduced the press technology to Korea for the first time
- 1989. Establishing Woosoung Chemical Co.,Ltd.**
In 1989, we further solidified our commitment to growth and innovation by establishing Woosoung Chemical Co.,Ltd.
- 1996. Establishing Base & Balance Line**
By the introduction of our Base & Balance line in 1996, we expand our production capacity.
- 1997. OEM Partnership with LG Chem**
In 1997, we entered into an OEM partnership with LG Chem, a strategic move that further expanded our market reach
- 2000. Export started for overseas Markets**
With a vision to establish a global presence, we embarked on our overseas business in 2000.
- 2001. ISO9001 Certification**
Obtained ISO9001 certification, demonstrating commitment to quality management and customer satisfaction.
- 2002. Completion of an automated line for continuous and consistent quality products**
Introduced automated in-line production, enhancing productivity and ensuring consistent product quality
- 2005. Automatic Cutting Belt Feeding**
Implemented automatic cutting belt feeding, improving operational efficiency and minimizing human error.
- 2011. ISO14001 / GOST Certification**
Earned ISO14001 and GOST certifications, underscoring commitment to minimizing environmental impact.
- 2013. CE / KC / RoHS Certification: Global Standards**
Obtained CE, KC, and RoHS certifications, validating adherence to global standards for safety, quality, and environmental responsibility.
- 2017. Setting Up 2nd Line and HB Mark Certificate**
Established a second production line and obtained the HB Mark Certification, showcasing commitment to high-quality flooring products.
- 2019. UL Greenguard (GOLD) Certificate: Indoor Air Quality**
Achieved the UL Greenguard (GOLD) Certificate, recognizing commitment to healthy indoor environments
- 2020. Floor Score Certificate: Indoor Environmental Quality**
Obtained the Floor Score Certificate, reinforcing dedication to indoor environmental quality
- 2024. Official launch of the LaFlor® LVT : Fulfilling our promise to provide world-class products**
Launched the LaFor® brand, highlighting 35 years of industry expertise and offering premium LVT flooring.

Woosoung: A Legacy of Innovation and Excellence

For 35 years, Woosoung has focused on making new and high-quality flooring. In future, we will continue to strive to create innovative flooring solutions that improve our customers' lives and contribute to a sustainable world.



Factory Status

-Location:

333-1 Mamyeong-Ri, Naechon-myeon, Pocheon-si, Gyeonggi-do, Korea

-Total Capacity per month : 1,000,000 sqm/month

Manufacturing Equipments

- Calender Lines for each layers
- Inline Laminating & Annealing production Lines
- Cutting Line : planks & tiles
- Packing line & Shipment

Manufacturing Process of LaFlor LVT

AUTOMATIC CALENDERING LAMINATE SYSTEM





Woosung LaFlor® Luxury Vinyl Tile & Plank

Our Woosung Chemical's LaFlor® LVT provides the following values and benefits to all customers

1. World-Class Premium Quality

Our LaFlor®.LVT is manufactured to our own stringent quality control that exceed international standards and is offered at very competitive prices.

2. Variety of design choices

We can make our LaFlor®.LVT with various designs through our data bank of over 500 design patterns.

3. Your Bespoke LVT

We can supply our product not only by our standard product but also by your any desired brand, colors, designs & specifications that meet your market demands.

4. Sustainability

Our LaFlor®.LVT are made by low CO2 and low VOC materials to promote a healthy environment.

5. Customer-Oriented Production

Our highly sophisticated and automated production line ensure short and accurate lead times.

Specification

■ Laflor® Premium Luxury Vinyl Tile & Plank (Dryback)

Thickness	Wear Layer (mm)	Width x Length (mm)	1Carton		Loading q'ty/ Container	
			Pcs	M2	Carton	M2
2mm	0.1 0.2 0.3	455 x 455	24	4.96	1,000	4,960
		180 x 920	30	4.96	1,000	4,960
		180 x 1220	22	4.83	1,000	4,830
		228 x 1524	14	4.86	1,000	4,860
3mm	0.1 0.2 0.3 0.5	455 x 455	16	3.31	1,000	3,310
		180 x 920	20	3.31	1,000	3,310
		180 x 1220	15	3.29	1,000	3,290
		228 x 1524	9	3.12	1,000	3,120

** 600 x 600mm tile also available by limited patterns

■ Laflor® Premium Luxury Vinyl Tile & Plank (Loose lay - dryback)

Thickness	Wear Layer (mm)	Width x Length (mm)	1Carton		Loading q'ty/ Container	
			Pcs	M2	Carton	M2
4.5mm (including Glass Fiber sheet)	0.3 0.5	455 x 455	11	2.27	1,000	2,270
		180 x 920	13	2.15	1,000	2,150
		180 x 1220	10	2.19	1,000	2,190
		228 x 1524	7	2.43	1,000	2,430
5mm (including Glass Fiber sheet)	0.3 0.5	455 x 455	10	2.07	1,000	2,070
		180 x 920	12	1.98	1,000	1,980
		180 x 1220	9	1.97	1,000	1,970
		228 x 1524	6	2.08	1,000	2,080

Product structure



Plank

3.0mm(T) x 920mm(W) x 180pcs(L)Box



NEW WS 602



NEW WS 201



NEW WS 609



WS 712



WS 713



WS 714



WS 711



WS 741



NEW WS 9308



WS 731



WS 722



WS 1560



WS 1561



WS 1562



WS 1563



NEW WS 9805



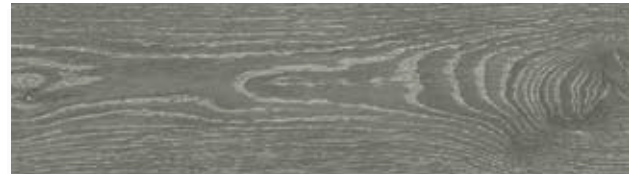
WS 8820



WS 8840



WS 1565



NEW WS 9806



WS 8821



WS 1510



WS 1515



WS 1507



WS 8841



WS 8850



WS 1502



WS 8811



WS 8812



WS 1508

Square

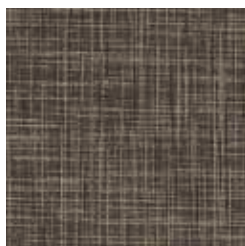
3.0mm(T) x 455mm(W) x 455mm(L) 16 pcs / Box



WS 1660



WS 1661



WS 1662



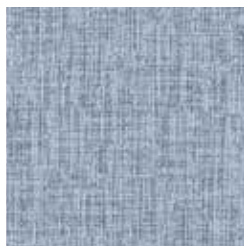
WS 1701



WS 1702



WS 1703



WS 1704



NEW

WS 061



NEW

WS 062

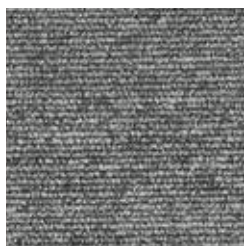


NEW

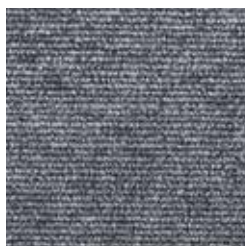
WS 063



WS 001



WS 002



WS 008

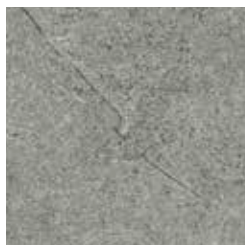


WS 009



NEW

WS 501



NEW

WS 502



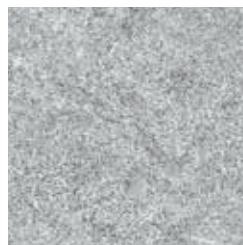
NEW

WS 503



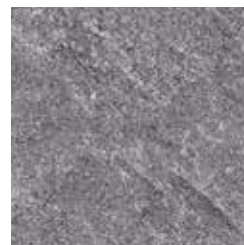
NEW

WS 511



NEW

WS 512



NEW

WS 513



WS 350



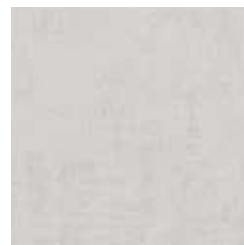
WS 303



WS 304



WS 961



WS 962



WS 963



WS 964



WS 9310



WS 9320



WS 9410



WS 9430



WS 9440



WS 951



WS 952



WS 1601



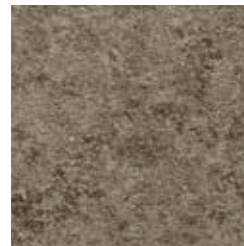
WS 1602



WS 1603



WS 1621



WS 1622



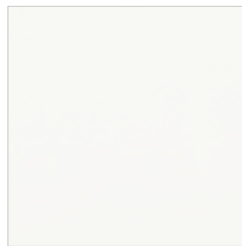
WS 1623



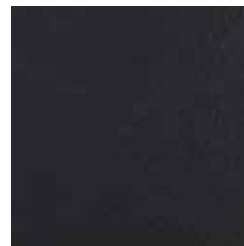
WS 1611



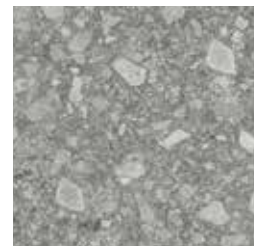
WS 1612



WS 1221



WS 1222



NEW

WS 451



NEW

WS 452



WS 1209



WS 1211

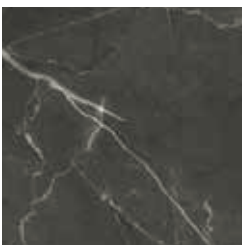


WS 1212



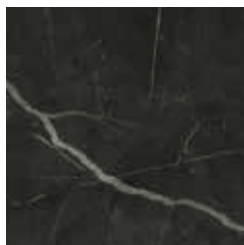
NEW

WS 101



NEW

WS 171



NEW

WS 172

Square Tile : 600 x 600mm



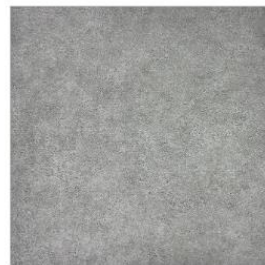
WS 6601



WS 6602



WS 6603



WS 6604



WS 6605



WS 6606



WS 6607



WS 6608





WS 062



WS 501



WS 513



WS 172



Flooring Excellence!

We, Woosung, will always be with you through ceaseless efforts and passion.



Woosung Chemical Co.,Ltd.
333-1 Mamyong-Ri, Naechon-myeon, Pocheon-si, Gyeonggi-do, Korea
Tel: +82-31-532-2250-3 Fax: +82-031-532-2254
Email : info@laflor.co.kr HP : www.laflor.co.kr